

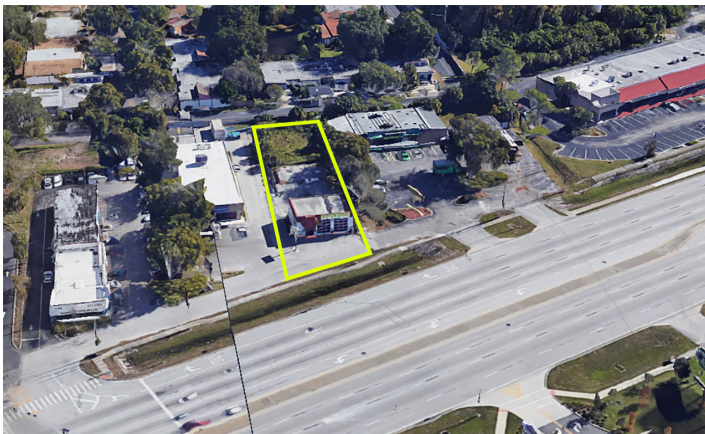
For Lease
 2nd Gen Auto Shop
 \$6,000/month+NNN



1780 SR 436 • Winter Park , FL 32792

Property Summary:

- Parcel ID; 33-21-30-300-0050-0000
- Lot Size; .35 AC
- AADT: 47,000
- Year Built/Renovated :1982/1995
- Construction: Masonry-Concrete Block



Executive Summary:

- Lease Rate: \$6,000/month +NNN
- SQFT; 1,200
- Construction: Masonry-Concrete Block
- Zoning: CG

	2 Mile	5 Miles	10 Miles
2023 Pop.	49,633	250,049	943,410
2023 Households	22,406	104,446	370,527
Med HH Inc.	\$67,543	\$67,887	\$65,225
Avg HH Inc.	\$92,516	\$91,621	\$87,433

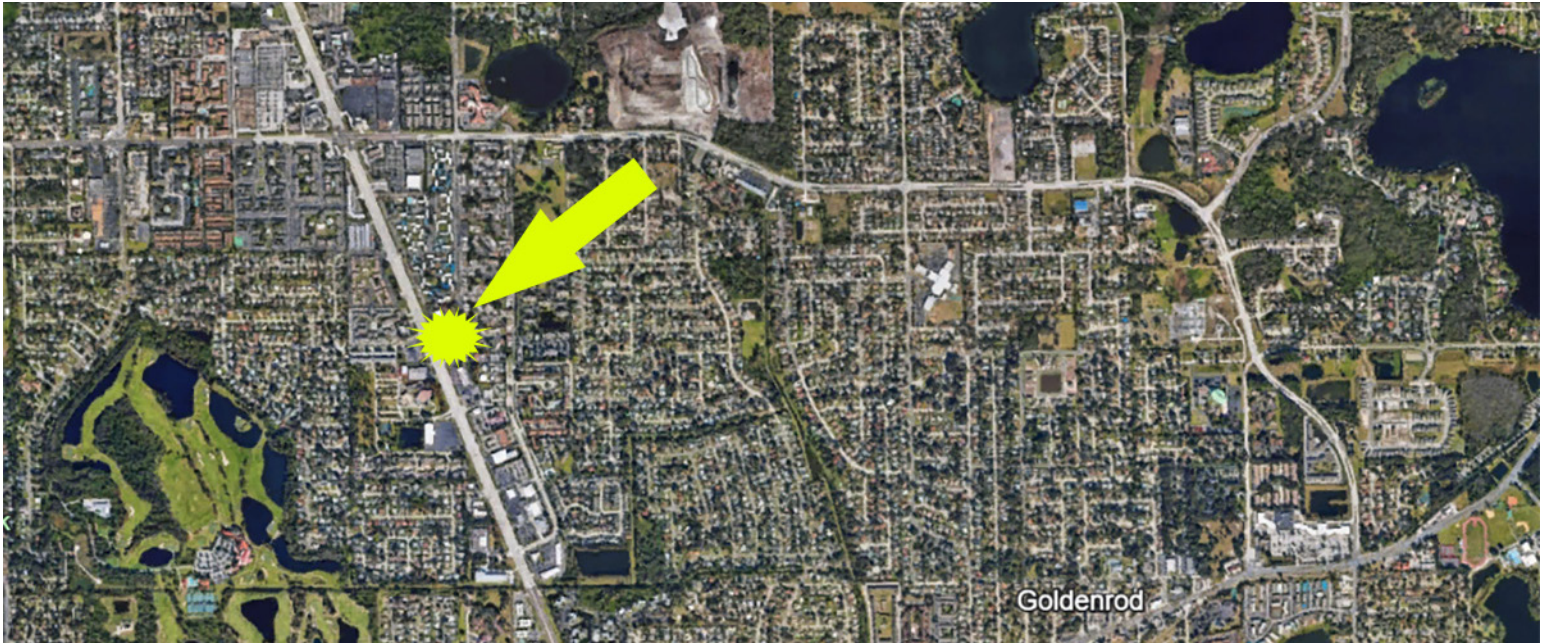
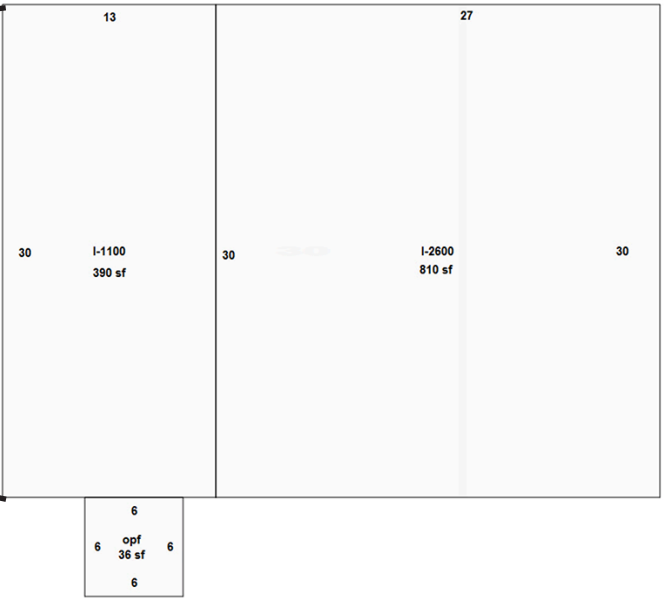
Traffic Count: 47,000 AADT

For More Information Contact
 T. Zachary High
 Licensed FL Real Estate Broker
 Zach@ElkPenn.com



321-866-8121
 www.ElkPenn.com
 861 W Morse Blvd., Suite 250
 Winter Park, Florida 32790

For Lease
2nd Gen Auto Shop
\$6,000/month+NNN



THIS IS A MARKETING COMMUNICATION
 © 2024 ElkPenn. This information has been obtained from sources believed reliable. We have not verified it and make no guarantee, warranty or representation about it. Any projections, opinions, assumptions or estimates used are for example only and do not represent the current or future performance of the property. You and your advisors should conduct a careful, independent investigation of the property to determine to your satisfaction the suitability of the property for your needs. All marks displayed on this document are the property of their respective owners. Photos herein are the property of their respective owners and use of these images without the express written consent of the owner is prohibited.

For More Information Contact
T. Zachary High
Licensed FL Real Estate Broker
Zach@ElkPenn.com

321-866-8121
www.ElkPenn.com
861 W Morse Blvd., Suite 250
Winter Park, Florida 32790